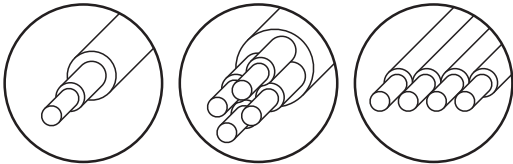


ELECTRONIC CUT,
STRIP & UNJACKET MACHINE

TSA15E



For single core,
multicore and flat cables



TSA15A is designed for the processing of insulated and un-insulated single core, multicore and flat cables. The machine counts the batch, measures the cutting length, strips and un-jackets without needing to change blades. Through an easy-to-use control panel with a keyboard and display, the operator can constantly overview the work in progress, set and correct batch parameters, and receive batch information.

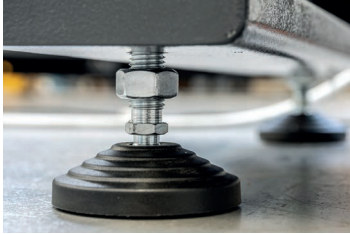
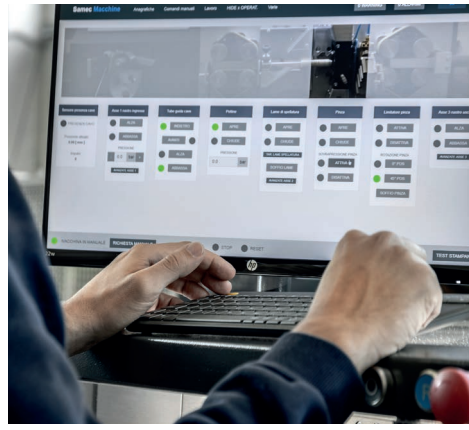
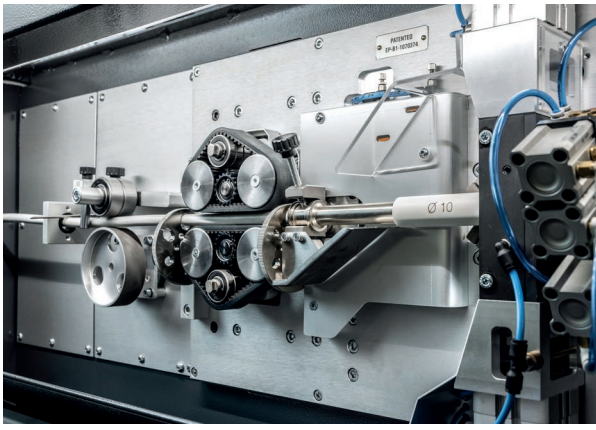
TSA15A is equipped for inline processing with other Samec machines, including motorized cable dereelers, pre-feeders, wire markers and stackers – the machines are connected through a cable to the various interfaces, allowing signal exchange between machines and centralized management of emergencies.

Manufactured using high quality methods and materials, the machine guarantees long term durability. The case is constructed in welded metal and all mechanical details are treated to prevent environmental oxidation. Electronic parts are produced with reliability and functionality in mind, using high integration components, while the top quality pneumatic parts can be easily found in Europe and abroad. The electrical system conforms to EN60204-1 industry regulations.



SAMEC MACCHINE reserves the right to modify its product contents and technical data without prior notice. This document is property of SAMEC MACCHINE in Vicenza, Italy.

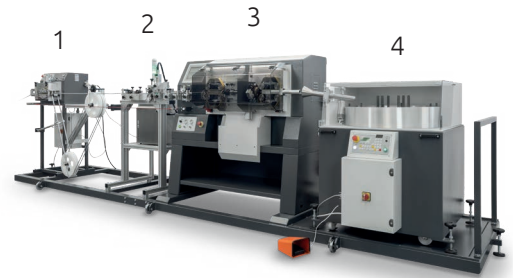

Italian Technology Quality



Some details

TECHNICAL SPECIFICATIONS

Data setup	By keyboard visible on back lighted display
Storable code	max. 5000
Programmable quantity of pieces	max. 9,999
Lots	programmable
Workable length	min. 120 mm - max. 500 mt.
Cable length control	With external encoder
Workable diameter	min. 2 mm - max. 16 mm
Flexible cable workable section	min. 1 mm ² - max. 70 mm ²
Insulation displacement length	programmable
Double incision with cable rotation	programmable
Feed speed	max. 3,0 mt./sec
Acceleration and deceleration ramps	programmable
External scoring unit software management	✓
Connectors for accessories	Prefeeder or dereeler, programmed marker/inkjet, line-stacker or pivots rewinder
OPTIONAL kit encoder for accessories management	Motorized stacker or pivotsrewinder
OPTIONAL	Touch-screen complete with PC
Power supply-absorption	400V - 50-60 Hz. - 8A
Air supply	6 bar continuous
Overall dimensions	1230 x 650 x H 1340 mm
Weight	Kg. 220



- Inline assembly example:
1. Prefeeder
 2. Inkjet marker
 3. Cut, strip & unjacket machine
 4. Coiler